



GIVE
SPACE
OR WAIT

How to share the road

TIPS FOR ROAD USERS

Tips for drivers

When Driving You Are Expected to-

C **Concentrate** - Even the smallest lapse in concentration means you could fail to see an unprotected person. At best this is scary; at worst a collision will injure or kill them.

O **Observe** - Pay close attention to what is going on around you; use your mirrors regularly and drive to the conditions. Look particularly for cyclists and motorcyclists near junctions.

A **Anticipate** - We can't always be sure what other people are going to do but just giving it some thought can reduce the chance of a collision. Expect cyclists to move out to avoid hazards.

S **Give Space** - More room between you and other road users gives you more time to react. Remember just a nudge on an unprotected person can have serious or tragic consequences.

T **Give Time** - Allow slower road users to travel safely, don't pressure or harass them. Allow more time to brake and stop in wet weather, more still in snow or ice.

The Law

- Cyclists can use the entire lane. Expect them to move out in the road to avoid hazards, to be seen better or make turns.
- Even if there is a cycle path or lane, it won't be appropriate for all cyclists to use all the time.
- The maximum penalty for Careless Driving is 9 points and 175% of weekly income for the most serious cases.



Highway Code

Rule 139 "Give cyclists at least as much room as you would a car when overtaking".

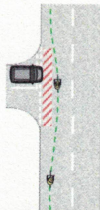
Rule 188 "When passing a cyclist give them plenty of room".

In practice this means at least 1.5m at 30mph, more at higher speeds.

- Stay out of the gutter. Ride on the left edge of the traffic flow at least 0.75m away from the kerb.
- If there's not enough room for a car to overtake you ride in the middle of your traffic lane (the primary position). This makes you more visible, gives you more space and discourages unsafe passing

Tips for cyclists

Recommended Road Position for Cycling



Take the lane on approach to side roads.

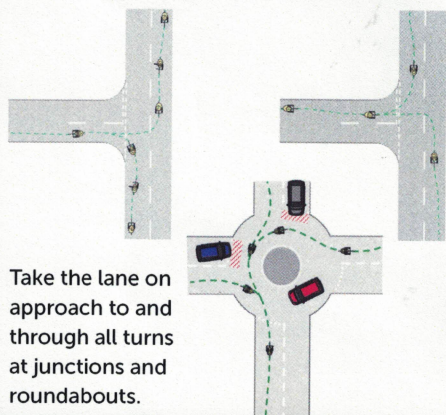
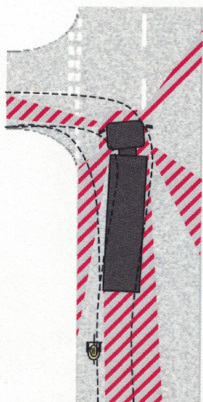


Take the lane on approach to narrow roads and pinch points.



Take the lane on approach to parked vehicles. Leave plenty of room (1.5m) when passing. Always watch out for doors being opened into your path.

Large vehicles tend to move to the right before swinging into a left turn. Do not ride along their left side.



Take the lane on approach to and through all turns at junctions and roundabouts.

- **Be aware of what is happening around you.** Look well ahead for obstructions or hazards and behind before you change road position or direction. Only move if there is suitable space available.
- **Look for others to react to you.** If you don't see any reaction, assume they haven't seen you and be ready to brake or steer if necessary.
- If there is anyone who needs to know what you are about to do **signal before you move.**
- **By Law, in the dark or bad visibility you must have lights** on the front and rear of your bike. Bright or reflective materials may also increase visibility in some circumstances.
- **Large Vehicles have big Blind Spots**
- **Only overtake** in a stationary queue when it is clear the vehicle won't suddenly begin to move.
- **Avoid riding or waiting in blind spots,** overtake on the right-hand side when oncoming traffic allows. Move ahead of the vehicle and ensure you are visible to the driver.
- **Training can improve your confidence** when cycling. It helps you to position yourself correctly on the road and around other vehicles.

Share the roads with care

GIVE
SPACE
OR WAIT

Tips for Road Users

All road users have equal rights to use the highway safely. This Leaflet features plenty of practical tips which can help you to improve road safety.

It will help you understand why people might drive or cycle in a certain way and how you can be safe and considerate around other road users when driving or cycling.

- Look carefully, especially at junctions or roundabouts
- Be aware of blind spots around all vehicles
- Look for others to react to you
- Signal your intentions to anyone who will benefit from knowing

RoadSafety

Gloucestershire
COUNTY COUNCIL



Visit:

www.roadsafety-gloucestershire.org.uk

we are
cycling
The Cycling Campaign UK

TRI FORCE
Specialist Operations
Collaboration



Produced by the Gloucestershire
Road Safety Team

